

Network card: landing following an offshore incident



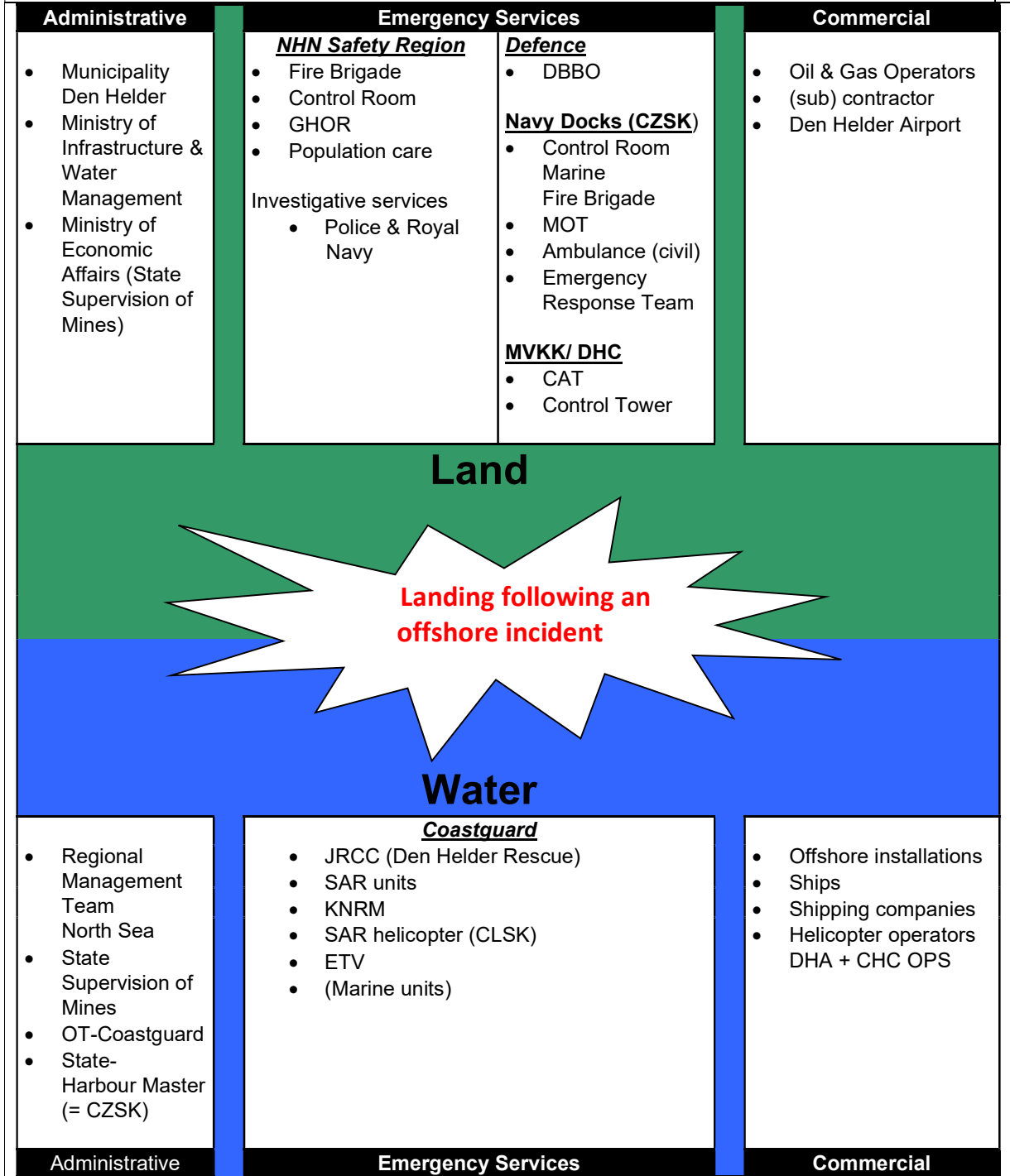
Network card landing following an offshore incident

Scenario: Landing in Den Helder following an offshore incident

This network card deals specifically with the impact of an offshore incident where casualties are landed at the Naval Docks and/or at De Kooy Maritime Airfield/ Den Helder Airport in de municipality Den Helder.

Many parties are involved in any such incident, and it is important that the Operators, the Local Authority and the Navy coordinate the following processes:

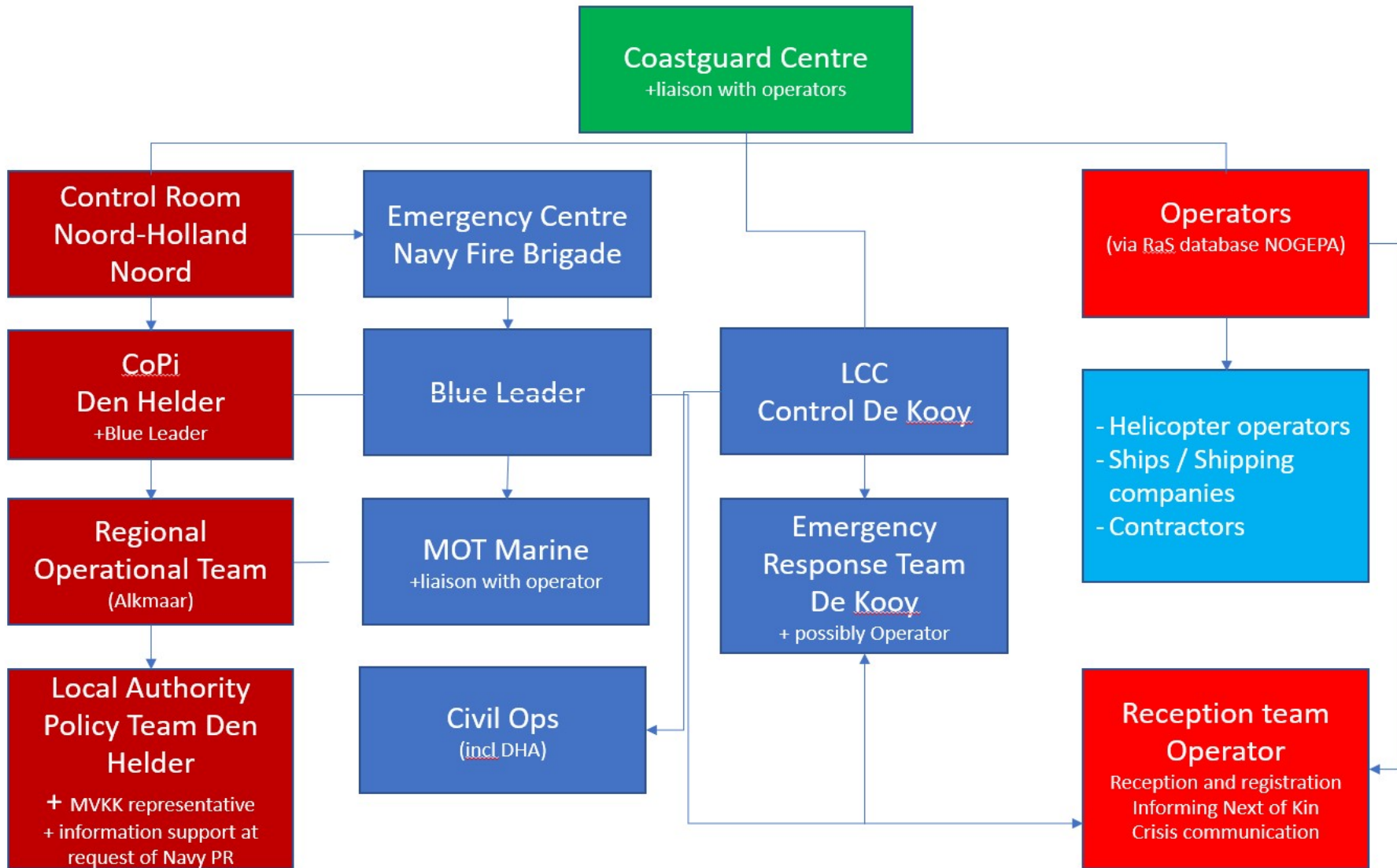
- Acute care casualties
- Registration of casualties by offshore companies
- Crisis communication



Information management				
Overview and Assessment	Who	What		How
	Coastguard	Determine the circumstances, make use of 'METHANE'		Via the situation report: → e-mail → by telephone → LCMS* * The Coastguard has a partner profile pd006 for LCMS. As soon as it is linked to an incident in LCMS and a Coastguard page has been created with the fields "View Judgment Decision", the Coastguard will share net-centric information via LCMS. This also applies to the navy.
	M	Major incident	Large-scale incident/accident, what happened?	
	E	Exact location	Exact location, described as accurately as possible	
	T	Type incident	Nature of the incident: explosion, collapse, traffic accident etc....	
	H	Hazards	Which dangers are present or could occur?	
	A	Access	Accessibility to the disaster area?	
	N	Number of Casualties	Estimation of the number and type of casualties?	
E	Emergency Services	Which emergency services are already present and which are required for further assistance?		

Deployment plan	
Management and co-ordination	<p>On water: The Coastguard is responsible for the process of the SAR in accordance with IBP Waddenzee, IBP Noordzee and IBP Samij. The management of incidents in the North Sea is under the direction of the North Sea Regional Management Team.</p> <p>After landing from the water: The management and coordination is carried out in accordance with the Regional Crisis Plan VRNHN. The Mayor is the Commander in Chief. Operational management rests with the highest manager depending on the escalation.</p>
Report and raising the alarm	<ul style="list-style-type: none"> • The report will be received by the KWC. • The operator involved and the KWC will keep one another informed from an early stage. If necessary, the operator sends a Coastguard Liaison to the Coastguard centre. • See further in the Network diagram 'landing after an offshore incident' below.

Network diagram landing following an offshore incident



Escalation	<p>Escalation will be handled via the Noord-Holland Control Room.</p> <p>Links to other organisations: As well as the operators, the helicopter operators may, at request, send a liaison to the LCC, ROT and the Local Authority. While many of the staff of the operators are hired-in, the operator is the point of contact for the KWC.</p>		
GRIP 0 routine	<p>Where the situation is manageable</p> <ul style="list-style-type: none"> - Notify the operators in accordance with the Emergency Response Plans, - the Navy via the Incident Response Plan (MOT)/ MVKK and the DHA in accordance to the Incident Response Plan (CAT) - Alert the VR-NHN via the Control Room 	<p>Prior to the landing of evacuees: KWC</p> <p>Following the landing of evacuees: MOT or CAT</p>	<p>+ Liaison with operators*</p> <p><i>*KWC shares the number of the operator with the Control Room NH.</i></p>
GRIP 1 source	<p>Source area: bringing ashore of large group VRNHN informs municipality for community care</p>	CoPI	+ Blue leader
GRIP 2 source and effect	<p>Where the landing creates an Area of Impact</p>	ROT (MOT may become action centre)	+ Officer of Ministry of Defence
GRIP 3 management	<p>In case of management questions concerning the landing of evacuees.</p>	GBT	<p>+ Liaison with CAT or MOT</p> <p>+ Liaison with operator</p>
De-escalation	<p>The operators in accordance with their own procedures. The government in accordance with the applicable procedure.</p>		
Available resources/ locations/ documents/ systems	<p><u>Planning:</u></p> <ul style="list-style-type: none"> • Regional Crisis Plan (Regional Safety Authority & Local Authority) • Emergency Plan MBDH • Operational plan Defence Complex MBDH • Incident Response Plan Noordzee, Waddenzee and IJsselmeer • Operator Emergency Response Plans • Incident Response Plan MVKK/DHA and Emergency Response Plan MVKK/DHA <p><u>Landing locations:</u></p> <ul style="list-style-type: none"> • Landing by boat and helicopter: Floating Landing Stage 19 MBDH • Landing by boat and helicopter: Floating Landing Stage 5 • Landing by helicopter: MVKK/ DHA <p><u>Reception locations:</u></p> <ul style="list-style-type: none"> • MBDH: At the direction of the MOT/Blue Leader, in accordance with the Emergency Plan • MVKK: company restaurant or sports hall (Rijksweg, Den Helder) <p><u>Information:</u></p> <ul style="list-style-type: none"> • Persons On Board lists (POB) via Vantage (via operator) • National Crisis Management System (LCMS) • Rescue at Sea database NOGEPA (RaS) • SIS (via ROT or CoPI) 		

Control measures for each process	
Process	Who does what
Information and communications	<ul style="list-style-type: none"> • Coastguard Information about facts of the offshore incident, control measures at sea and landing of casualties • Regional Management Team North Sea Incidents (RBN) Where there is escalation with a North Sea incident the RBN will handle crisis communications, possibly with the assistance of the National Information Centre. • VRNHN Coordinated by Expert Team Community Care according to GRIP structure. . • Local Authority The mayor is responsible within his municipality and is advised by AOV'er and VR-NHN • Operator Information about matters of substance • Navy/ Air Force Support in accordance with the Emergency Plan General: 'Each organisation will remain responsible for communications / information about their own tasks and activities'. The various parties involved must be in agreement both in the interpretation of the incident and on the image of the parties involved.
Reception and care	<ul style="list-style-type: none"> • Operator Arrange reception and care for offshore personnel and family • Navy/ Air Force Depending on the landing location the Navy or the MVKK will arrange facilities for reception and care • VR-NHN If there is a GRIP escalation, reception and care is organized regionally from the Expert Team Community Care, cf. the Regionaal Crisisplan VRNHN. Ovd Community Care calls the operator and xx people come onshore.
Registration and information of relatives	<ul style="list-style-type: none"> • Operator The operators have a duty of care and have lists of persons having boarded and who were on the platforms. These lists are shared with the Expert Team Community Care and local agreements will be made with the liaison about this information to the relatives. • Navy/ Air Force The evacuees may be registered at the reception location. The Navy may initiate this and provide support to the operator. • VR-NHN In principle, no specific registration of landed persons takes place. Specific data of landed persons is included on the basis of their acute care questions. The Expert Team Community Care will initially focus on people who are not self-reliant or less self-reliant. When there are large numbers of missing persons, Victim Information System (SIS) will be started in consultation with the General Commander of Community Care.
<p>NB: Access to the Naval and Air Force sites: All parties will regularly send an updated list of staff involved in the landing of evacuees to the Hoofd Bureau beveiliging MBDH (Head of Security Bureau MBDH) (email address Naval Operational Team). The Local Authority or the oil&gas operator will email the list of names of the missing persons to the MBDH (the family must indicate who they are coming for and bring their ID).</p>	

Contact list		
Organisation	Phone number	Email:
Coastguard Centre	Urgent: 0900-0111 Normal: 088 958 4000 Spokesperson: 088 950 2222	ccc@kustwacht.nl
Control Room North-Holland	112	
CaCo	088 06 13 999	CACO.MNH@landelijkemeldkamer.org
Controlroom KMB Blue Leader	0223-652222 06-30722168	
Naval Operational Team	088 951 0897	MBDH@mindef.nl
LCC de Kooy Calamity Action Team De Kooy	088 9583300 (24/7)	DHC.LCC.MVKK@mindef.nl
Den Helder Airport	0223-635666 06-53772293	
North West Services & Security	0223-660552	
Naval Fire Brigade	0223- 652222 (urgent) 0223-652333 (not urgent)	CZMNED.KMB1@MINDEF.NL
MVKK	088 9563001	
Regional Operational Team	072-5678670	infomanagerrot@vrnhn.nl
Den Helder Municipality AOV	0223-678680	
Reference is made to the Emergency Response Plans of the operators and/or the NOGEPA Rescue-at-Sea database for contact details of the operators.		

ABBREVIATIONS	
AOV	Public Order and Security Officer
AC KMB	Emergency Centre Naval Fire Brigade
BHV	Company emergency response
BL	Blue Leader
Caco	Incident Coordinator Control Room
CAT	Incident Response Team
CLSK	Air Force Command
CoPI	Incident Location Command
CZSK	Naval Forces Command
DBBO	Defence Monitoring and Security Organisation
DHA	Den Helder Airport
DHC	Defence Helicopter Command
GBT	Municipal Policy Team
GHOR	Medical Accident and Incident Assistance Service
GRIP	Coordinated Regional Incident Control Procedure
IBP	Incident Control Plan North Sea
KLPD	National Police Service Corps
KWC	Coastguard Centre
KMar	Royal Military Police
KNRM	Royal Netherlands Rescue Society
LCC	Local Coordination Centre (De Kooy)
LCMS	National Crisis Management System
Liaison	Representative of operator present at the KWC/MBDH/MVKK
MBDH	Marine Base Den Helder
MOT	Naval Operational Team
MVKK	De Kooy Marine Airport
NHN	North-Holland North
NOGEPA	Netherlands Oil and Gas Exploration and Production Association, part of Element NL
OPS	Operations De Kooy
OvD	Duty Officer
OVR	Officers region
RBN	Regional Management Team North Sea Incidents
ROT	Regional Operational Team
RCC	Regional Coordination Centre
SAR	Search and Rescue
SIS	Victim information system
SodM	State Supervision of Mines
VR-NHN	Safety Region North-Holland North

Appendices:
<ol style="list-style-type: none"> 1. Map of Nieuwe Haven Naval Complex 2. Map of De Kooy Maritime Airfield



Map of Nieuwe Haven Naval Complex

This Network Card has been prepared with the input of:

Municipality of Den Helder (Gemeente Den Helder)
De Kooy Maritime Airfield (Maritiem Vliegveld de Kooy)
Regional Safety Authority NHN (Veiligheidsregio Noord-Holland Noord)
Royal Navy, Maritime Support Den Helder (Koninklijke Marine, Maritieme ondersteuning Den Helder)
Den Helder Airport
NOGEPA
Coastguard (Kustwacht)
Directorate for Public Works and Water Management, Sea and Delta division (Rijkswaterstaat Zee en Delta)